

BENJAMIN SAMUEL

Press Release

Hitchcock illuminated

The German Museum of Film acquires the artwork "Hitchcock³⁰" (2011) by German artist Benjamin Samuel

Frankfurt/Main, Sep 14th, 2012 – The transformed data of 283.500 film-frames taken from 30 films of Alfred Hitchcock were condensed by Benjamin Samuel onto a transparent medium of 1,8m². Framed in a backlit light-box, the artwork will illuminate the foyer of the newly refurbished German Museum of Film in Frankfurt/Main.

Benjamin Samuel was partly inspired by the conversations between the two directors Alfred Hitchcock and Francois Truffaut. "Hitchcock's work is extraordinary, not only because of the single movies by themselves, but also due to the significance of his films in the context of his complete oeuvre", Benjamin Samuel explains. Thus the artist developed an algorithm to extract the color-values of film-frames from all of Hitchcock's films since his move to Hollywood, from REBECCA (1940) to FAMILY PLOT (1976), a total of approx. 56 hours of film, resulting in synthesized color-bands. What emerges is an abstract play of colors and shadows.

9450 film-frames were extracted from each individual film.

Example:

- PSYCHO (1960) has a total running time of 109min =
109min x 60sec = 6540sec
- A total of 9450 film-frames were extracted, at equal temporal intervals.
6540sec ÷ 9450 = approx. every 0,7sec a film-frame was extracted
- At 24 frames/second, about every 16th film-frame from the movie PSYCHO was used.

The German Museum of Film receives the corresponding artwork entitled "Kubrick ¹³⁺⁹⁺¹⁰" (2012) by Benjamin Samuel as a loan. The source for this work were 107.445 film-frames from the 13 movies by the director Stanley Kubrick.

Both works may be viewed from the 18th of September 2012 onwards, in the Foyer at the German Museum of Film, Schaumainkai 41, Frankfurt/Main, Germany.

BENJAMIN SAMUEL

BENJAMIN SAMUEL

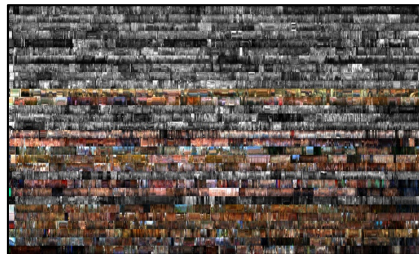
Benjamin Samuel was born in Frankfurt/Main in 1981. He studied architecture, film and music at New York University, the University of Miami, the University of Applied Arts in Vienna and the Architectural Association in London. He lives and works in Frankfurt.

www.benjaminsamuel.net

PRESS CONTACT

presse@benjaminsamuel.net

ABBILDUNGSNACHWEISE

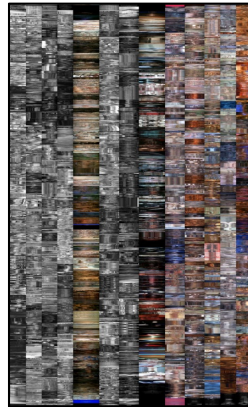


Hitchcock 30 (2011)

Benjamin Samuel

Duraclear LED Light Box

174 x 105cm



Kubrick 13+9+10 (2012)

Benjamin Samuel

Duraclear LED Light Box

105 x 174cm



Portrait Benjamin Samuel

© Ronald Schwarzbeck